

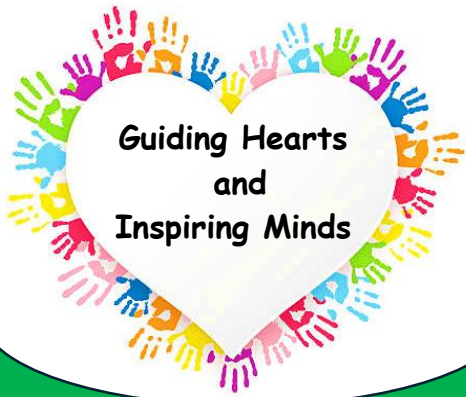
What went well in St. Mark's ELC 2024-25:



- We hosted a fun day for all parents/carers to attend with a variety of fun activities to participate in, this was well supported and attended by our families.
- Focused learning sessions for families well attended and supported
- Home visits for new families was a successful addition this year.
- Cash for kids, Free cakes for kids, Kids love clothes
- Monthly digital SWAYs sent out to parents showcasing the learning across the setting
- School uniform clothing bank established, working alongside this provision to ensure all families have sufficient clothing for their children starting primary one, this proved very successful and well used.
- Buddy system, for pre-schoolers and P6
- Continuation of Cuppa chats twice a year, both sessions highly attended by parents.

Recommendations from HMIE Report, April 2024:

- Improve approaches to evaluating the work of the nursery with a continued focus on improving outcomes for all children.
- Review approaches to planning of learning, teaching and assessment to develop a shared understanding of high-quality learning and teaching.
- Continue to improve and increase opportunities for children to lead learning across the nursery, ensuring that experiences are well matched to children's needs and interests.
- Continue to develop approaches for checking children's progress, to ensure they have a clear focus on raising attainment of all children.



Our Plan for Improvement 2025-26

We value: Relationships, Inclusion, Respect and Resilience

Improving Learning Teaching and Assessment

- Staff to gather more robust data/evidence to measure impact being made more effectively and ensure next steps are clear and communicated with families.
- Digital Tech to enhance learning opportunities. New Clever Touch Boards to be used independently by children.
- Enhance Outdoor Learning opportunities through creating a more stimulating outdoor space in all rooms to further enhance Literacy and Numeracy experiences.
- Upskill staff to ensure a common understanding of what very good learning looks like for all staff members.
- Develop the use of Next Steps in planning.

Improving Health and Wellbeing:

- Further develop the understanding and connection of the ELC's vision, values, and aims for all stakeholders, through clear communication and practical examples.
- All Staff to complete training on UNCRC and go for Silver Accreditation - continue to embed the language of Rights throughout the Nursery.
- Work with ASL team and ED Psych to further develop staff skillset in communication strategies .
- Staff will review resources to ensure they reflect and promote diversity.

Securing Children's Progress:

- Aspirational ethos and enabling environments created across the setting.
- Observations will capture individual children and group views and opinions
- Practitioners will identify and articulate impact of collaborative working.
- Responsive and intentional planning will clearly show the value added from effective partnerships.